

Manual PC|Schematic to RailDesigner

First of all you need to download the component database.

Please go to our Web on www.pcschematic.com

In the lower left corner you select:

1. Component databases
2. Select the link [component manufacturer databases for PC|SCHEMATIC Automation](#),
3. Followed by Download database ([Component_DB.EXE](#))

You have now downloaded our UK database which include Weidmüller terminals

In PC|SCHEMATIC Automation you have to select the downloaded database.

1. In the Settings menu select Database...
2. Now click Select Database file
3. Click Next
4. Select the database file PCSLevDBUK6.mdb
5. For table please select Components and Next

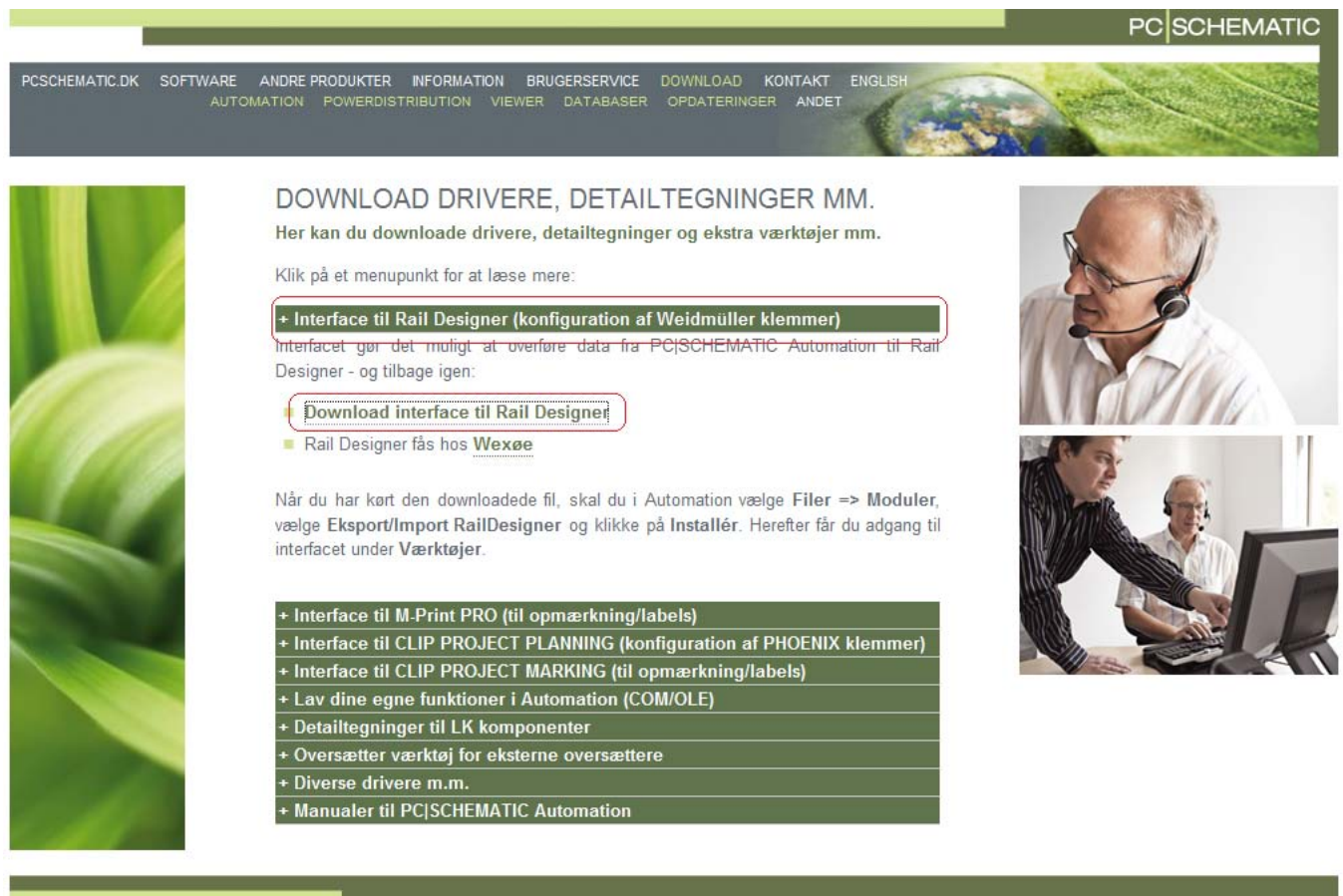
The UK Component database is now connected to the program.

You now need to download our RailDesigner interface.

Please go to our Web on www.pcschematic.dk

Sorry to direct to the Danish, but the new English is not up yet, and the old one does not have this link. The new will be running within 2 weeks.

Please select *Download* followed by *Andet* and download the interface, see below.



The screenshot shows the PC|SCHEMATIC website interface. At the top right is the logo. A navigation bar contains links: PCSHEMATIC.DK, SOFTWARE, ANDRE PRODUKTER, INFORMATION, BRUGERSERVICE, DOWNLOAD, KONTAKT, ENGLISH, AUTOMATION, POWERDISTRIBUTION, VIEWER, DATABASER, OPDATERINGER, ANDET. The main content area is titled "DOWNLOAD DRIVERE, DETAILTEGNINGER MM." and includes the text: "Her kan du downloade drivere, detailtegninger og ekstra værktøjer mm." Below this, it says "Klik på et menupunkt for at læse mere:" and lists a menu item: "+ Interface til Rail Designer (konfiguration af Weidmüller klemmer)". A description follows: "Interfacet gør det muligt at overføre data fra PC|SCHEMATIC Automation til Rail Designer - og tilbage igen:" and a button: "Download interface til Rail Designer!". A note states: "Rail Designer fås hos [Wexøe](#)". Further instructions: "Når du har købt den downloadede fil, skal du i Automation vælge **Filer => Moduler**, vælge **Eksport/Import RailDesigner** og klikke på **Installér**. Herefter får du adgang til interfacet under **Værktøjer**." A list of other available interfaces is shown in a table-like structure:

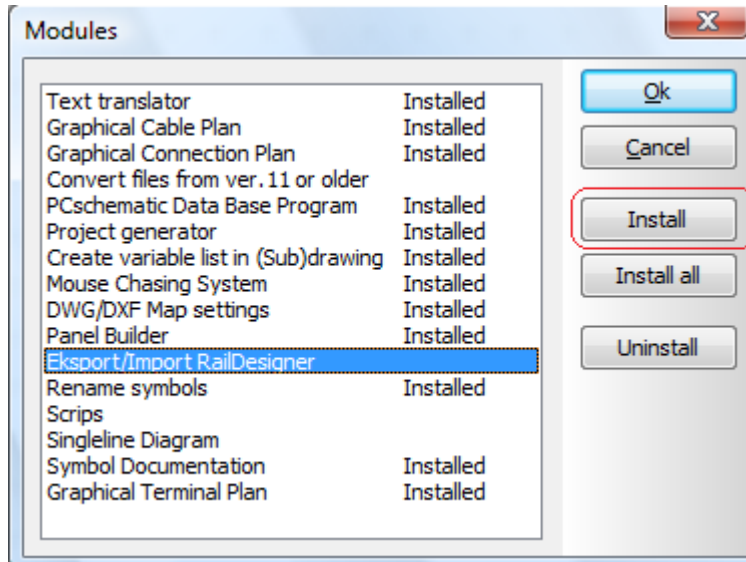
+ Interface til M-Print PRO (til opmærkning/labels)
+ Interface til CLIP PROJECT PLANNING (konfiguration af PHOENIX klemmer)
+ Interface til CLIP PROJECT MARKING (til opmærkning/labels)
+ Lav dine egne funktioner i Automation (COM/OLE)
+ Detailtegninger til LK komponenter
+ Oversætter værktøj for eksterne oversættere
+ Diverse drivere m.m.
+ Manualer til PC SCHEMATIC Automation

On the right side of the page, there are two images: the top one shows a man wearing a headset, and the bottom one shows two men looking at a computer screen.

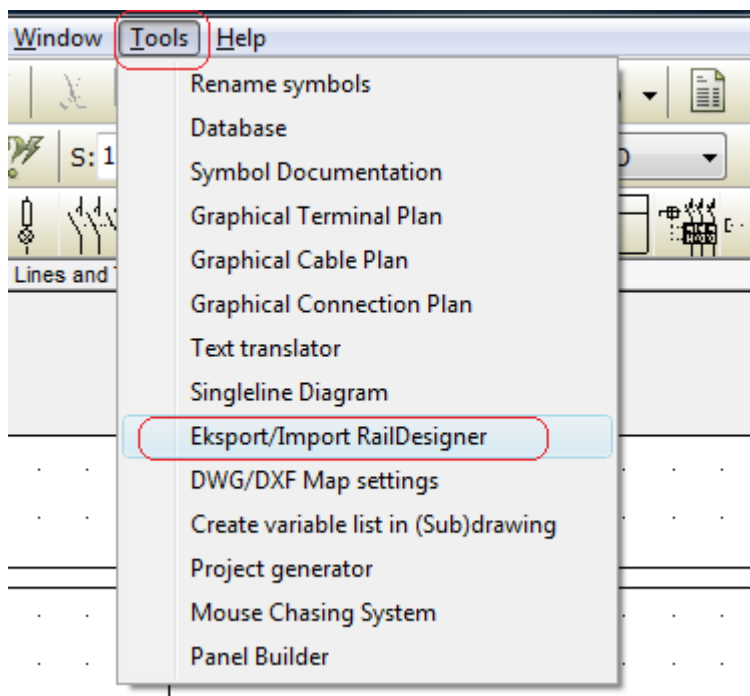
Manual PC|Schematic to RailDesigner

After the installation please do the following:

1. Go to the File menu and select *Modules*
2. Select Eksport/Import RailDesigner, Install and Close
3. The installed module is now available from the Tools menu

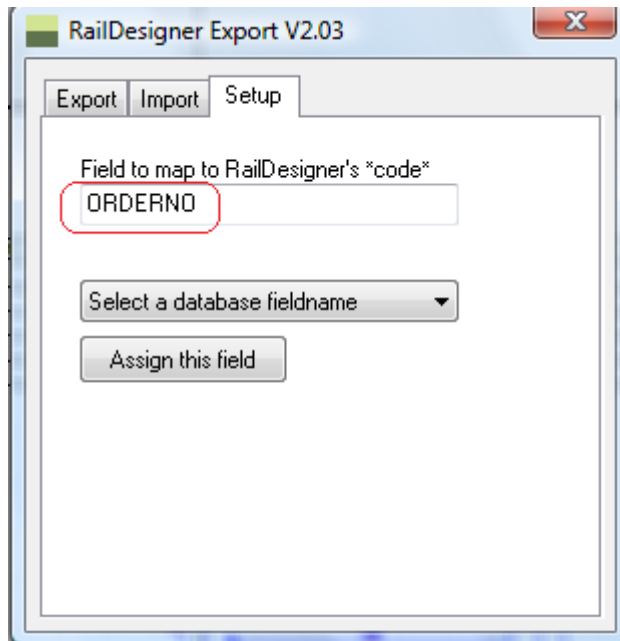


4. Select Eksport/Import RailDesigner in the Tools menu



5. To setup the right database field activate the Setup tab and select and ASSIGN the database field ORDERNO

Manual PC|Schematic to RailDesigner

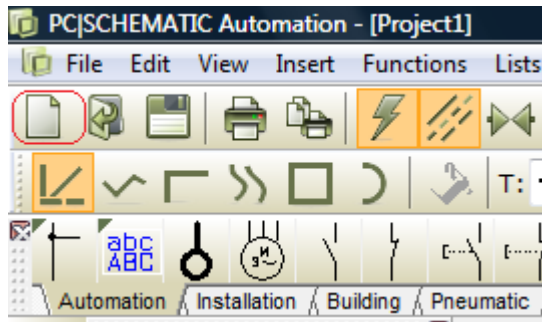


You should now be ready to try the RailDesigner interface.

However we have recognized a problem. It seems that RailDesigner must be started by persons or programs who/which have Administrator rights.

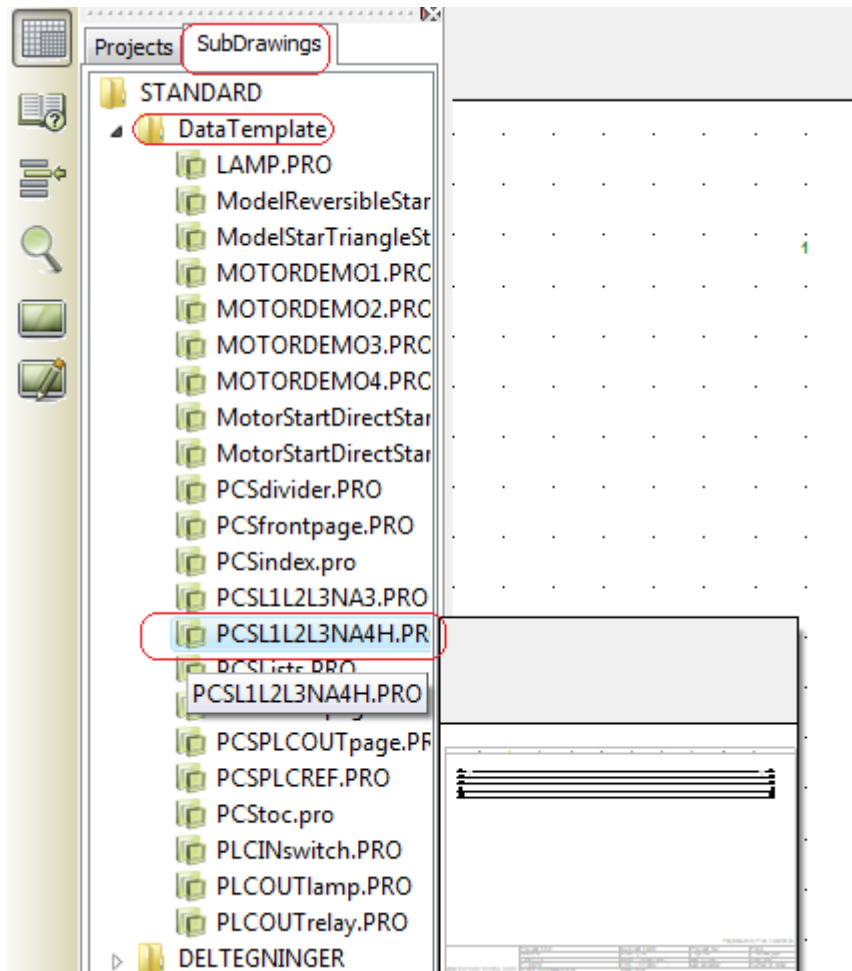
Please be aware of that. I hope that this is something which can be solved, as not all users are allowed to run as Administrator.

For fast testing please start a new project.

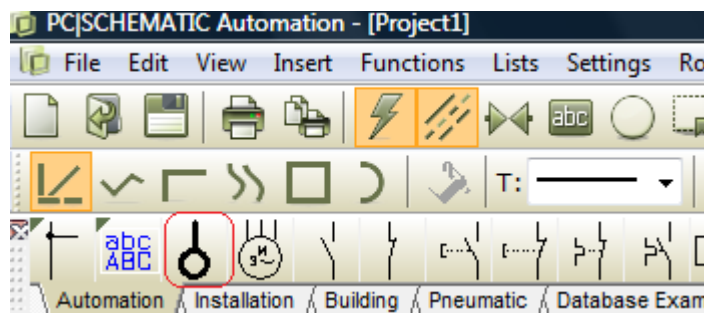


On the left side please select Subdrawings, DataTemplates and the electrical page PCSL1L2L3NA4H.Pro, and drag this page into the project.

Manual PC|Schematic to RailDesigner

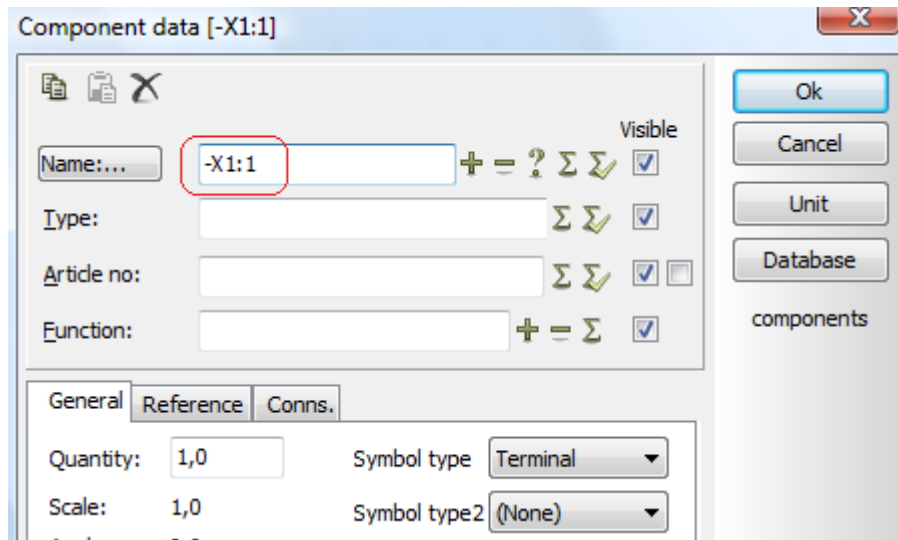


Hereafter you just place a few terminals on the page.



When placing the terminals, you get the below dialog box each time.

Manual PC|Schematic to RailDesigner

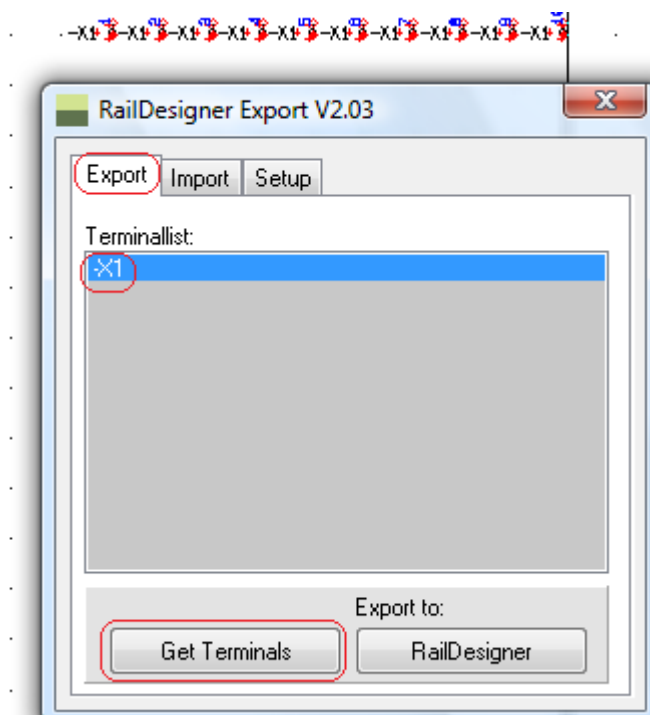


Place e.g. 10 terminals with the numbers -X1:1, -X1:2 -X1:10

You have now placed 10 terminals without any part number. This selection we leave to railDesigner.

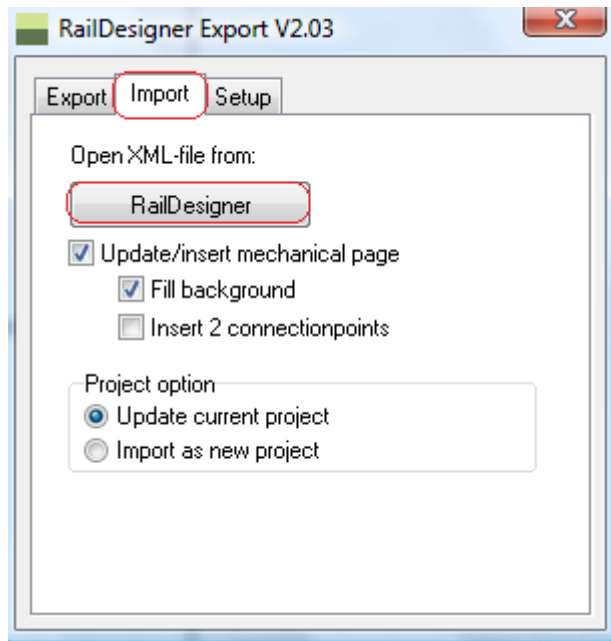
Save the project file and:

1. Select Eksport/Import RailDesigner in the Tools menu

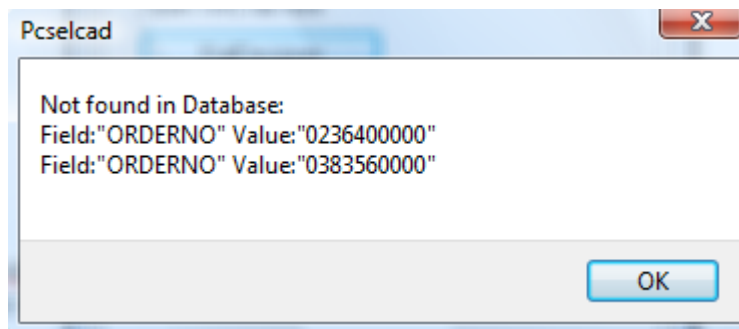


2. In the Export tab click Get Terminals, Select -X1 and click RailDesigner.
3. As the data selected must be in our Automation database, select the WDU 2,5 BL terminal
4. Coming back from RailDesigner, you see the following

Manual PC|Schematic to RailDesigner



5. In the Import tab click RailDesigner
6. If some parts are not found in the database, you get the below message

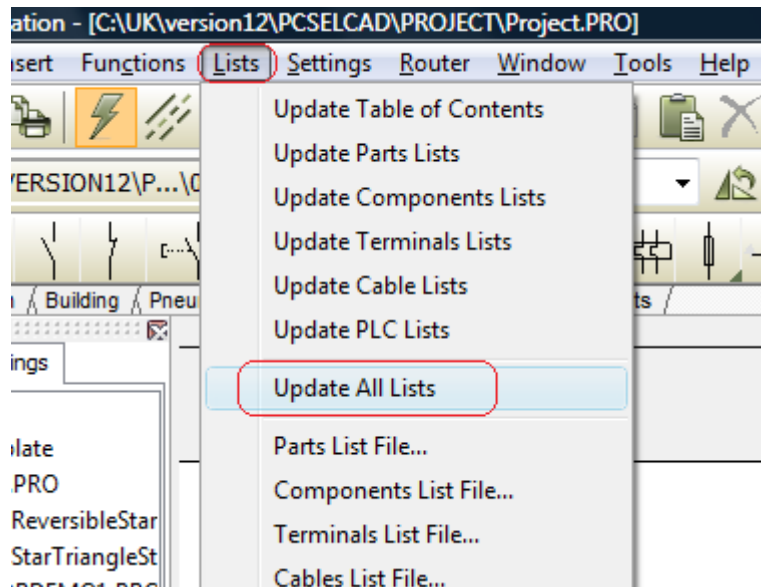


The parts found in the installed database are shown on a mechanical page, and if you select the electrical page, you will see that the terminals have been updated with the data selected in RailDesigner.

On the left side again select Subdrawings, DataTemplates and this time the file PCSLists.Pro, and drag this page into the project.

This time you have dragged a set of different Lists into the project.

Manual PC|Schematic to RailDesigner



In the Lists menu you now select Update All Lists.

Try and look through the lists and you will find the Table of contents, components list, parts list and the terminal list updated.